

# H TIMING PULLEYS

## 0.500" Trapezoidal Pitch

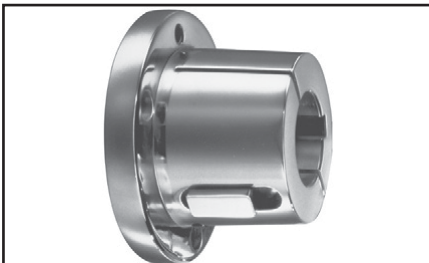
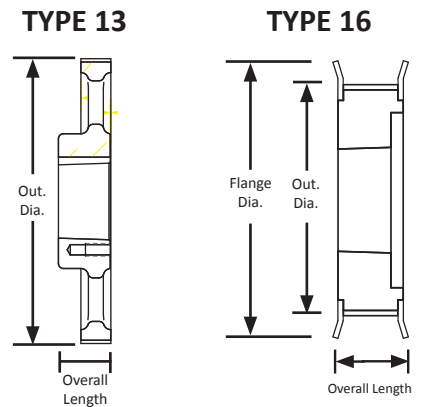
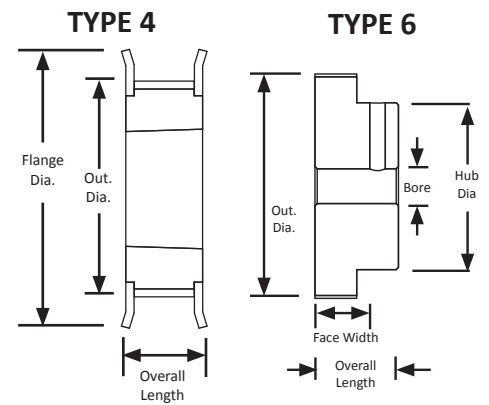
### For 1" Wide Belts

### Steel/Iron

### Split Taper Style



Part Number	No. of Teeth	Type	Pitch Dia. (in)	Out. Dia. (in)	Flange Dia. (in)	Bushing	Face Width (in)	Overall Length (in)
14HG100	14	4	2.228	2.174	2.438	G	1.250	1.875
16HG100	16	4	2.548	2.492	2.875	G	1.250	1.875
18HH100	18	4	2.865	2.811	3.125	H	1.250	1.875
20HH100	20	4	3.183	3.129	3.375	H	1.250	1.875
22HH100	22	16	3.501	3.447	3.813	H	1.250	1.438
22HP100	22	6	3.501	3.447	3.813	P1	1.250	2.125
24HH100	24	16	3.820	3.768	4.063	H	1.250	1.438
24HP100	24	6	3.820	3.766	4.063	P1	1.250	2.125
26HH100	26	16	4.138	4.084	4.375	H	1.250	1.438
26HP100	26	6	4.138	4.084	4.375	P1	1.250	2.125
28HH100	28	16	4.456	4.402	4.688	H	1.250	1.438
28HP100	28	6	4.456	4.402	4.688	P1	1.250	2.125
30HH100	30	16	4.775	4.721	5.000	H	1.250	1.438
30HP100	30	6	4.775	4.721	5.000	P1	1.250	2.125
32HQ100	32	7	5.093	5.039	5.313	Q1	1.250	2.781
36HQ100	36	7	5.730	5.676	6.000	Q1	1.250	2.781
40HQ100	40	7	6.386	6.312	8.563	Q1	1.250	2.781
44HQ100	44	7	7.003	6.949	7.250	Q1	1.250	2.781
48HQ100	48	7	7.839	7.585	7.875	Q1	1.250	2.781
60HQ100	60	13	9.549	9.495	-	Q1	1.250	2.781
72HQ100	72	13	11.459	11.405	-	Q1	1.250	2.781
84HQ100	84	13	13.369	13.315	-	Q1	1.250	2.781
96HQ100	96	13	15.279	15.225	-	Q1	1.250	2.781
120HQ100	120	13	19.099	19.045	-	Q1	1.250	2.781
156HQ100	156	13	24.828	24.774	-	Q1	1.250	2.781



For matching Split Taper bushings,  
see page 374.



For matching H pitch belts,  
see page 199.